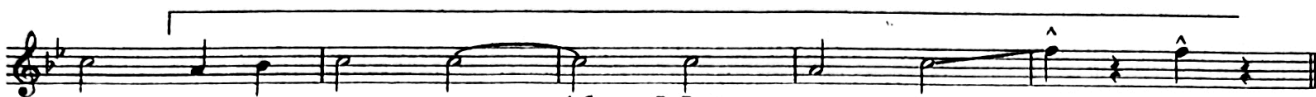
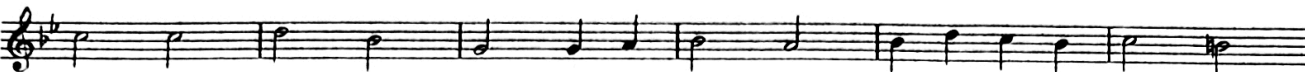
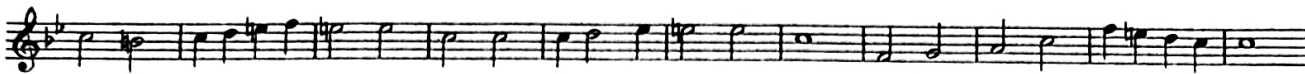
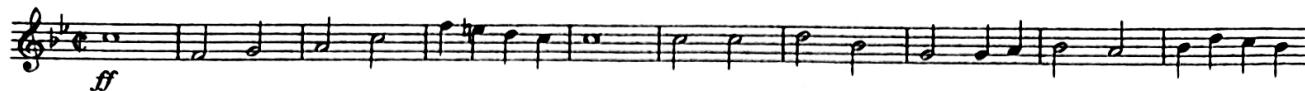


Fight Song!

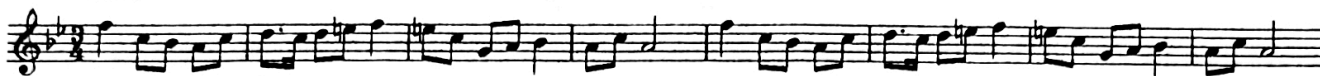
Sullivan East High School
1998

$\text{♩} = 144$



Alma Mater

$\text{♩} = 76$



Low Rider

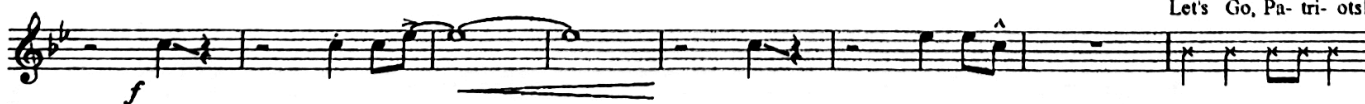
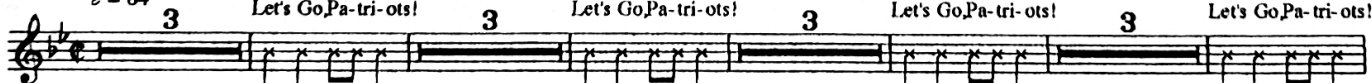
arr. Spencer N. Finch

$\text{♩} = 136$



Let's Go Patriots

$\text{♩} = 84$



Lola

♩ = 140

Musical score for 'Lola' in 4/4 time, tempo 140. The score consists of four staves. The first staff begins with a dynamic marking of *f* and *ff*. The second staff includes a first ending bracket labeled '1.' and a second ending bracket labeled '2.'. A section marked 'A' is indicated above the second staff. The piece concludes with a double bar line.

The HEY Song

♩ = 124

Musical score for 'The HEY Song' in 4/4 time, tempo 124. The score consists of three staves. The first staff begins with a dynamic marking of *f* and a first ending bracket labeled '4'. The piece concludes with a double bar line.

Red

♩ = 124

Musical score for 'Red' in 4/4 time, tempo 124. The score consists of one staff with a dynamic marking of *f*. The piece concludes with a double bar line.

White

♩ = 120

Musical score for 'White' in 4/4 time, tempo 120. The score consists of three staves. The first staff begins with a dynamic marking of *f* and a first ending bracket labeled '8'. The piece concludes with a double bar line.

Blue

♩ = 144

Musical score for 'Blue' in 4/4 time, tempo 144. The score consists of two staves. The first staff begins with a dynamic marking of *f* and a first ending bracket labeled '8'. The piece concludes with a double bar line.